

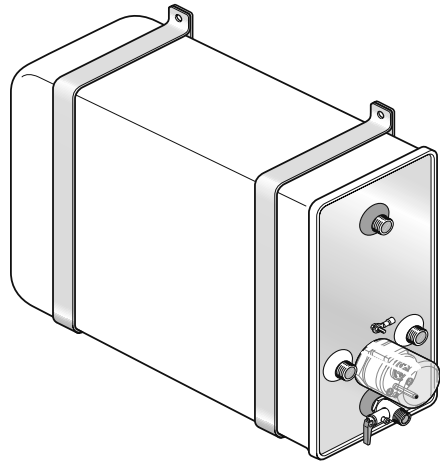
CE REV 005A

Quick®

High Quality Nautical Equipment

BOILER INOX

BX 16



IT

Manuale d'uso

GB

User's Manual

FR

Manuel de l'utilisateur

DE

Benutzerhandbuch

ES

Manual del usuario

PT

Manual de uso

SE

Bruksanvisning

NL

Handleiding

BOILER SERIE INOX

WATER HEATER STAINLESS STEEL

CHAUFFE-EAU ACIER INOX

BOILER EDELSTAHL

CALENTADOR ACERO INOX

AQUECEDOR INOXIDÁVEL WATER

VATTENVÄRMARE I ROSTFRI STÅL

BOILER RORSTVIJ STAAL



IT	INDICE	Pag. 4 Pag. 5 Pag. 6 Pag. 7 Pag. 8/9	Caratteristiche tecniche Installazione Schema di collegamento Uso - Avvertenze importanti Manutenzione
-----------	---------------	--	--

GB	INDEX	Pag. 10 Pag. 11 Pag. 12 Pag. 13 Pag. 14/15	Technical data Installation Connection diagram Usage - Warning Maintenance
-----------	--------------	--	--

FR	SOMMAIRE	Pag. 16 Pag. 17 Pag. 18 Pag. 19 Pag. 20/21	Caractéristiques techniques Installation Schéma de câblage Utilisation - Avvertissements importants Entretien
-----------	-----------------	--	---

DE	INHALTSANGABE	Seite 22 Seite 23 Seite 24 Seite 25 Seite 26/27	Technische Eigenschaften Installation Anschlussplan Gebrauch - Wichtige Hinweise Wartung
-----------	----------------------	---	--

ES	INDICE	Pág. 28 Pág. 29 Pág. 30 Pág. 31 Pág. 32/33	Características técnicas Instalación Esquema de montaje Uso - Advertencias importantes Mantenimiento
-----------	---------------	--	--

PT	ÍNDICE	Pág. 34 Pág. 35 Pág. 36 Pág. 37 Pág. 38/39	Características técnicas Instalação Esquema de conexão Uso - Avisos importantes Manutenção
-----------	---------------	--	--

SE	INNEHÅLLSFÖRTECKNING	Sid. 40 Sid. 41 Sid. 42 Sid. 43 Sid. 44/45	Tekniska egenskaper Installation Kopplingsschema Användning - Viktiga föreskrifter Underhållsarbete
-----------	-----------------------------	--	---

NL	INDEX	Pag. 46 Pag. 47 Pag. 48 Pag. 49 Pag. 50/51	Technische eigenschappen Installatie Aansluitingsschema Gebruik - Belangrijke waarschuwingen Onderhoud
-----------	--------------	--	--



HOW TO IDENTIFY THE WATER HEATER THROUGH THE CODE:

1° EXAMPLE: BX1605S

BX	16	05	S	-
↓	↓	↓	↓	↓
a	b	c	d	e

2° EXAMPLE: BX1612SL

BX	16	12	S	L
↓	↓	↓	↓	↓
a	b	c	d	e

<p>a</p> <p>Product name: [BX] = "Boiler Inox"</p>	<p>b</p> <p>Tank capacity (liter): [16] = 16 liter</p>	<p>c</p> <p>Power of electric element: [00] = not installed [05] = 500 W [06] = 600 W ⁽⁴⁾ [12] = 1200 W</p>	<p>d</p> <p>Heat exchanger: [S] = present [-] = not present</p>	<p>e</p> <p>Voltage of electric element (if installed): [-] = 220 Vac [L] = 110 Vac</p>
--	--	--	---	---

MODEL		BX 16
TANK CAPACITY	Liters	16
	US gallon	4.22
Tank material		AISI 316 Stainless steel
Thermal insulator		Polyurethane foam
External cladding material		Thermoformed material
Tank pressure during testing		800 kPa ⁽¹⁾
Maximum working pressure		600 kPa ⁽¹⁾
Electric element voltage rating ⁽²⁾		220 Vac ± 10% - (110 Vac ± 10%)
Weight with heat exchanger ⁽²⁾		500 W [Model 05] - 600 W [Model 06] ⁽⁴⁾ - 1200 W [Model 12]
Weight ⁽³⁾	Kg	10,5
	Pounds	23.5

⁽¹⁾ 1 Bar = 100 kPa

⁽²⁾ Available on request 110Vac ± 10%, 1200W

⁽³⁾ Of empty equipment

⁽⁴⁾ Only for 110 Vac



Quick® reserves the right to introduce changes to the equipment and the contents of this manual without prior notice.

In case of discordance or errors in translation between the translated version and the original text in the Italian language, reference will be made to the Italian or English text.



NAUTIC WATER HEATER

Our long experience operating in the nautical field has given us the means to supply a new series of water heaters with innovative characteristics compared with other heaters available on the market. The advantages given by Quick® Nautic boilers are:

- high quality of materials ensure the product is both reliable and long lasting.
- Heat exchanger with a large exchanging surface.
- Producing hot water also by means of an electric element, which is provided with an adjustable and safety thermostat.
- Relief/non return valve that allows discharging of the water heater in case of disuse.
- The installation is easy and practical on a flat area.

**BEFORE USING THE WATER HEATER READ CAREFULLY THIS INSTRUCTION MANUAL.
IF IN DOUBT, PLEASE CONTACT THE NEAREST "QUICK®" DEALER.**



WARNING: use this water heater in the applications described in this manual. Don't use the equipment for any other purposes. Quick® will not be held responsible for damage to equipment and/or personal injuries cause by a misuse of the equipment.

PACKAGE CONTAINS: water heater - mounting - user's manual - conditions of warranty.

INSTALLATION SITE

The water heater has to be placed in a dry and well-ventilated location. This precaution is required, even though water heaters are made of sea environment resistant materials, since electrical systems are present (in models provided). Moreover, if installed in non-ventilated environments, condensation could occur and could be mistaken for a leak.

INSTALLATION

- Put mounting on the tank (1).
- Fix water heater on wall, as shown in fig. 1, using suitable mountings for the weight of the water heater and for the type installation site in the boat.



WARNING: the weight of water heater/unit in the technical data refers to the empty unit. In order to have the gross weight add to the empty weight, the water amount. (1 liter of water will almost weigh 1 Kg. / 2,2 lb).

- Carry out the hydraulic connections, relating to the input and output of tap water and from the engine cooling to the heat exchanger, as shown in fig. 2. Keep the connections between engine cooling system and heat exchanger as short as possible.



WARNING: the overpressure release pipe must be positioned sloping evenly downwards in a location protected from the formation of ice.



WARNING: water might drip from the overpressure release pipe of the device, and this pipe must be left open to the atmosphere.



WARNING: when fittings are used on water outlets, use Loctite 243, 577 or Teflon on the threads in order to ensure tightness. Make sure that there is no water leakage.



FIG.1

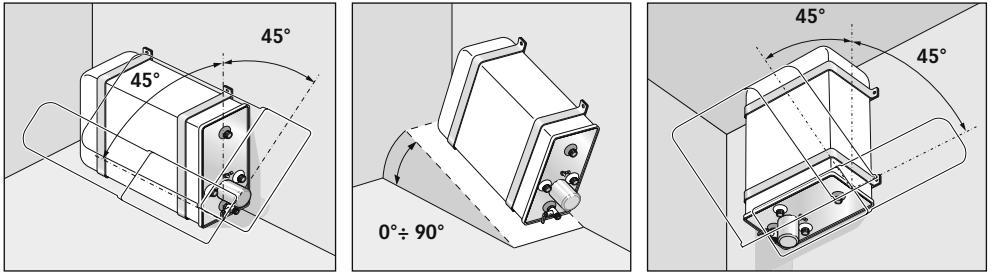


FIG.2

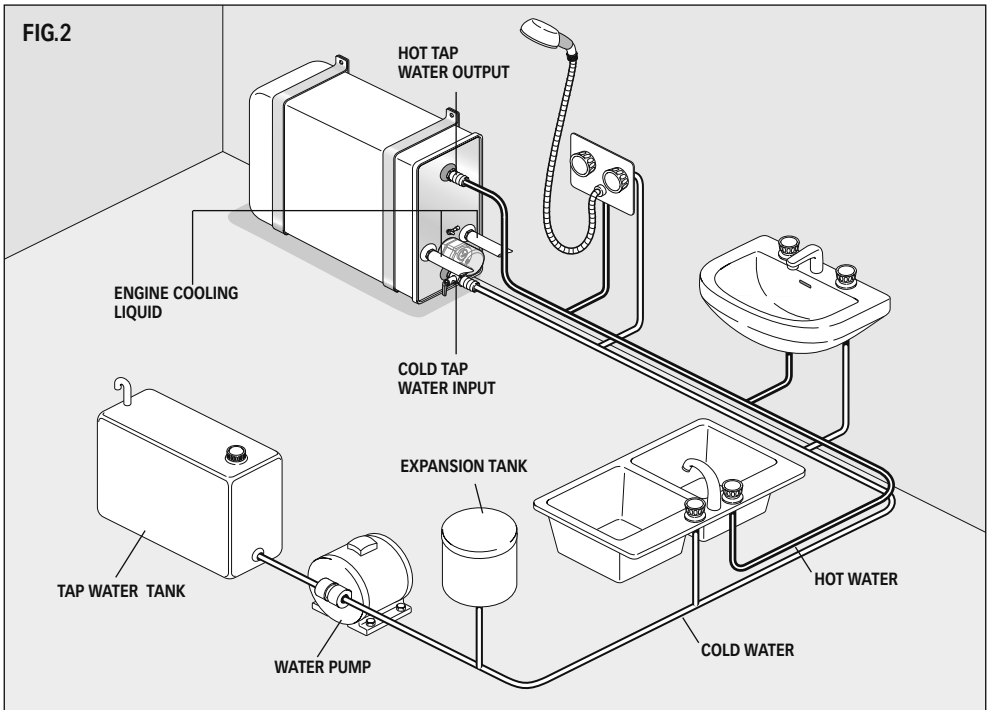


FIG.3

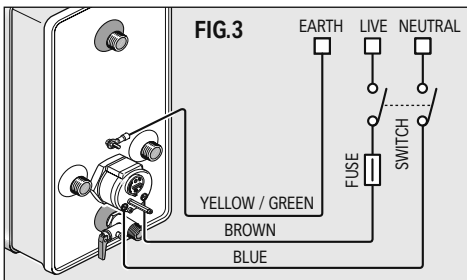
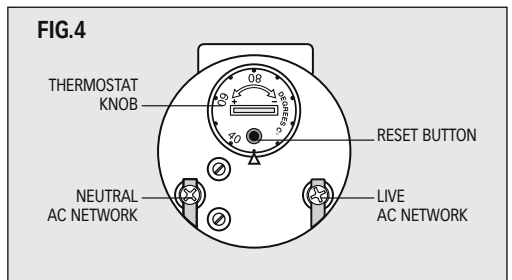


FIG.4





WARNING: follow the instructions of the boat engine manufacturer on how to connect engine cooling liquid to the heat exchanger.

- Fit the stub pipe (11) to the valve (9) using hose clamp.
Fit the pipe so as to allow any possible water leak not to cause damage to part of the boat.
- Open up hot water taps of washbasins and start the water pump.
This allows water to fill water heater and force air out of water heater and pipes.
Close taps as soon as air free water comes out.
- Check that there are no leaks on pipe joints.

UNIT POWER SUPPLY (In models provided)

See fig.3 for the connection. Make sure the water heater operating voltage is the same as that provided by AC network.

A double pole switch has to be included on the electric installation, in order to turn on and off the unit, and a fuse of suitable rating. The insulation between connections contacts of the AC network must be at least 3 mm. The connections to AC network must be done following the National Specifications on electrical installations.



WARNING: before carrying out the connection make sure the cables are not live.



WARNING: don't operate the electric element if the tank is not filled with water. It may cause a permanent damage to the electric element.

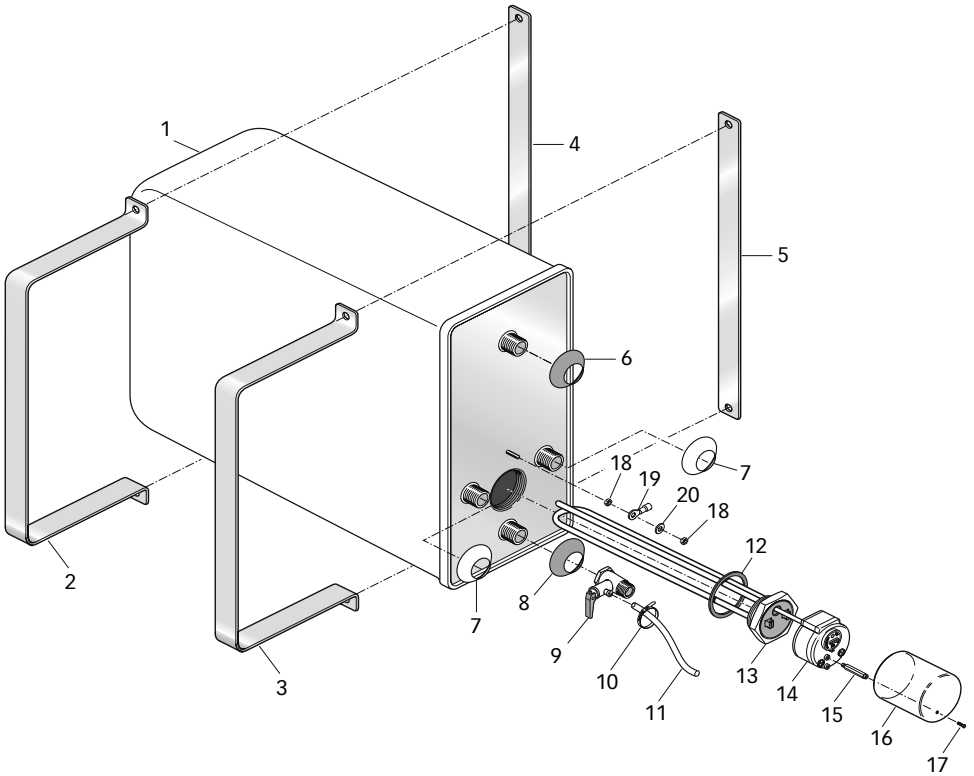
THERMOSTAT ADJUSTING (in models provided)

The standard temperature value of the thermostat is 60°C. If you wish to change it, follow the instructions below:

- shut down power supply.
- Remove the protection cover (16) in order to reach the thermostat (14).
- Adjust the thermostat knob with a screwdriver (fig. 4) and turn it to the required temperature.
- Replace on the protection cover (16).
- Switch on power supply.



The mixer controls the hot water temperature when the heating elements and the heat exchanger are used.





POS.	DESCRIPTION	CODE
1	Water Tank	MLB160000000
2	Tank mounting	MBFPGX700300
3	Tank mounting	MBFPGX720300
4	Tank mounting	MBFPNX395300
5	Tank mounting	MBFPNX400300
6	Red plastic washer	PECRBLRS0000
7	White plastic washer	PECRBLBNC000
8	Blue plastic washer	PECRBLBL0000
9	Relief / non return valve	MNVALS12S68P
10	Hose clamp	PBF25100W000
11	Pipe	PVTBGM5NT030
12	Electric element gasket	PGGRES000000
13A	Electric element 1200W 220V	EVR122200000
13B	Electric element 500W 220V	EVR052200000
13C	Electric element 1200W 110V	EVR121100000
13D	Electric element 600W 110V	EVR061100000
14	Double thermostat	EVT15S000000
15	Plastic spacing bar	PBTE25H6FMF0
16	Cap	PCCPLT600000
17	Screw	MBV0306MXCE0
18	Nuts	MBD04MXEN000
19	Ground cable terminal	EJCY04000000
20	Washer	MBR04X000000



WARNING: Quick® nautic water heaters are provided with a double thermostat with manual reset that shuts down power supply in case of an excessive water temperature.

If it happens, follow the instructions below:

- shut down power supply.
- Remove the protection cover (16) in order to reach the thermostat (14).
- Adjust the thermostat knob with a screwdriver (fig. 4) adjust the thermostat to its max temperature.
- Push the reset button on the double thermostat (fig. 4).
- Re-adjust the thermostat knob with a screwdriver (fig. 4) and turn it until the required temperature.
- Replace on the protection cover (16).
- Switch on power supply.



WARNING: if the high temperature safety system switches on repeatedly, call Quick® service center.

MAINTENANCE



During wintertime, when the water heater is not in use it should be drained using the lever of the valve (9). This is to avoid serious damage caused by freezing.

Periodically check the joints of the water pipe installation; check the tightness of the securing screws and replace them in case they are worn or corroded.

Also periodically check the electrical system working order.

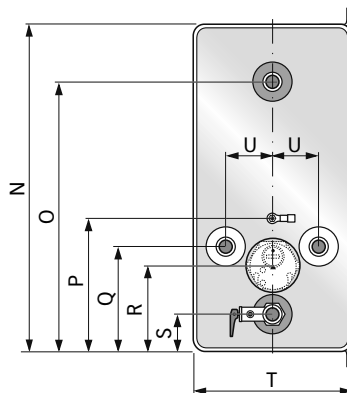
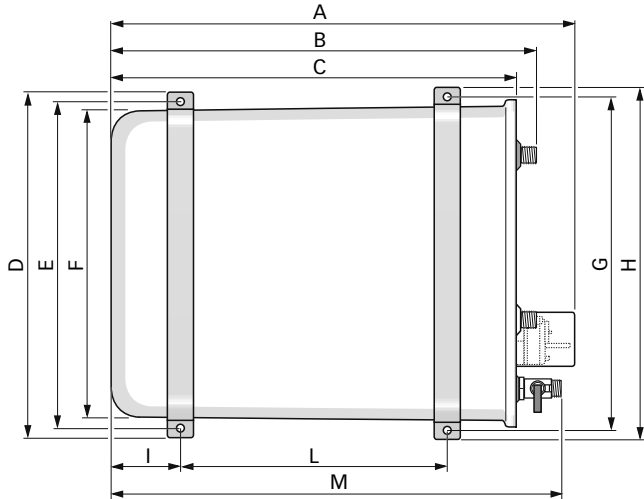
BOILER BX 16L - DIMENSIONI mm (inch)



WATER HEATER BX 16L - CHAUFFE-EAU BX 16L - BOILER BX 16L

CALENTADOR BX 16L - AQUECEDOR BX 15L - BOILER BX 16L - VATTENVÄRMARE BX 16L

BX	16L	4.22 GAL
A	520	(20" ¹⁵ / ₃₂)
B	480	(18" ⁵⁷ / ₆₄)
C	470	(18" ¹ / ₂)
D	395	(15" ⁹ / ₁₆)
E	370	(14" ⁹ / ₁₆)
F	350	(13" ²⁵ / ₃₂)
G	375	(14" ³ / ₄)
H	400	(15" ¹ / ₄)
I	120	(4" ²³ / ₃₂)
L	260	(10" ¹ / ₄)
M	505	(19" ⁷ / ₈)
N	375	(14" ³ / ₄)
O	310	(12" ³ / ₁₆)
P	150	(5" ²⁹ / ₃₂)
Q	120	(4" ²³ / ₃₂)
R	100	(3" ¹⁵ / ₁₆)
S	40	(1" ⁹ / ₁₆)
T	180	(7" ¹ / ₁₆)
U	50	(1" ³¹ / ₃₂)

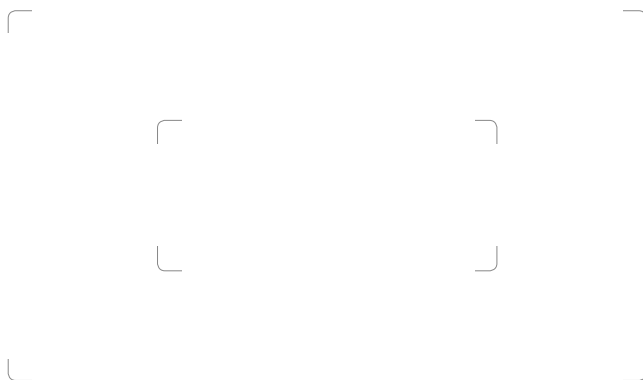


NOTES



BOILER BX16

R005A



IT Codice e numero seriale del prodotto

GB Product code and serial number

FR Code et numéro de série du produit

DE Code- und Seriennummer des Produkts

ES Código y número de serie del producto

PT Código e número de série do produto

SE Kod och produktens serienummer

NL Code en serienummer van het product

Quick[®]
Nautical Equipment

QUICK[®] SRL - Via Piangipane, 120/A - 48124 Piangipane (RAVENNA) - ITALY
Tel. +39.0544.415061 - Fax +39.0544.415047

www.quickitaly.com - E-mail: quick@quickitaly.com